



Invue One Pod TWL Help Document. One65

APRIL 6

SLSRTC - www.slsrtc.co.nz
Authored by: Mark Clanse



Contents:

Key Components – Names & Product Codes	Page	4 - 5
Tools Required to Re-Merchandise	Page	6
How to remove a device from the One65 Stand	Page	7 – 9
How to install a device onto the One65 Stand	Page	10 - 12

Key Component Names and Product Codes



One 65 stand DBD120-W



One 65 Sensor DBD201-W



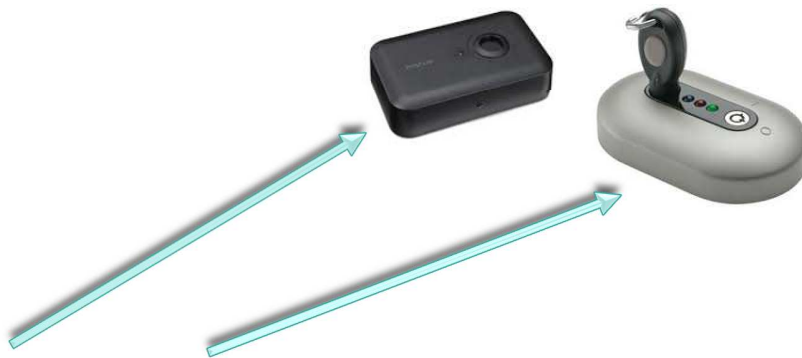
One 65 Power connector DBT507 Micro, DBT 508USB-C, DBT509 Lightning.



One 65 2-way bracket arms DBH282-W handheld, One 65 4-way bracket DBT294 (Tablet).



IR Key AK4400.



New and Old Both will work, must not be swapped with other stores, each programming station is Unique to a store.

Requires Power supply PS512.



Invue 8 port Charging station PK4408.

Requires Power supply PS515.

Tools required to Remerchandise



Invue Multi Tool AF6313.



Invue Magnet DBG400 (4 Pack).



Invue replacement sensor and arm sticker ADH2180 (8 Pack).



Paint scraper or similar.

How to remove a device from Invue One65 stand



Step 1: Ensure you have a programmed IR Key, note Blue Light when button is pressed.

If Red light shows on IR Key, then re program IR Key with programming station.



Light should change to Blue on programming station and IR Key.

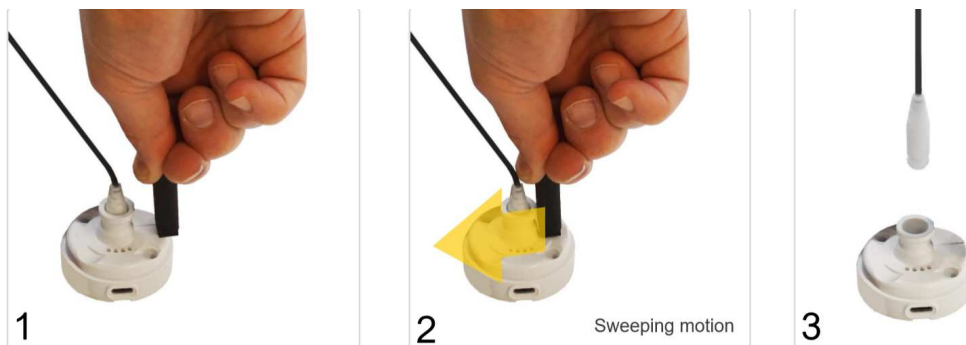
**Step 2: Unlock the retractor at the back of the stand.
1/4 turn anti clockwise.**



Step 3: Disarm the Invue stand. Yellow LED should go out. You now have 30 seconds to remove the retractable cable from the sensor head.



Step 4: Use Magnet to release Cable



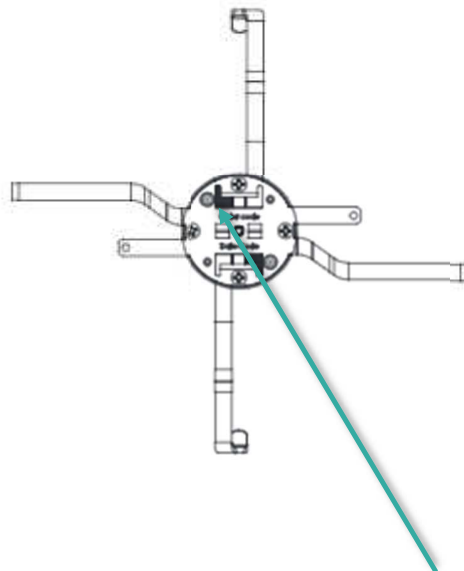
You should now have the sensor head with arms free of the One65 stand.

Step 5: Remove sensor from arm Bracket.



Select correct screwdriver Bit to remove two black screws at the top of the sensor. Separate sensor from arm bracket using suitable tool (Paint Scraper).

Step 6: Remove the arms from the device.



**Change Bit on multitool to the Philips bit, loosen 4 screws and remove arms
Remove arm Base from Device (You can use paint scraper if careful).**

How to Install a device onto Invue One65 stand.

Step 1: Make sure you have the correct Power cable.



Insert into sensor head.

Step 2: Replace old stickers with new making sure to clean all old residue form arm bracket and sensor.



Step 3: Reinstall Bracket to new device ensuring you do not cover camera and important side buttons. Make sure Bracket arms are tight to device.

Step 4: Attach sensor head to bracket arms and install power cable to device.

Step 5: Reattach retractor cable to sensor head.

Step 6: Lock down retractor Cable using Magnet.



Step 7: Stand should self-arm, (Small LED next to IR Dot on sensor head, yellow if armed)



If not use IR Key to arm, wait up to 30 seconds for light to come on.

IF LED does not come on then re-check all steps above before Calling for help.

For further Technical assistance please either Email, mark@slsrtc.co.nz or call on 021 879 664.

